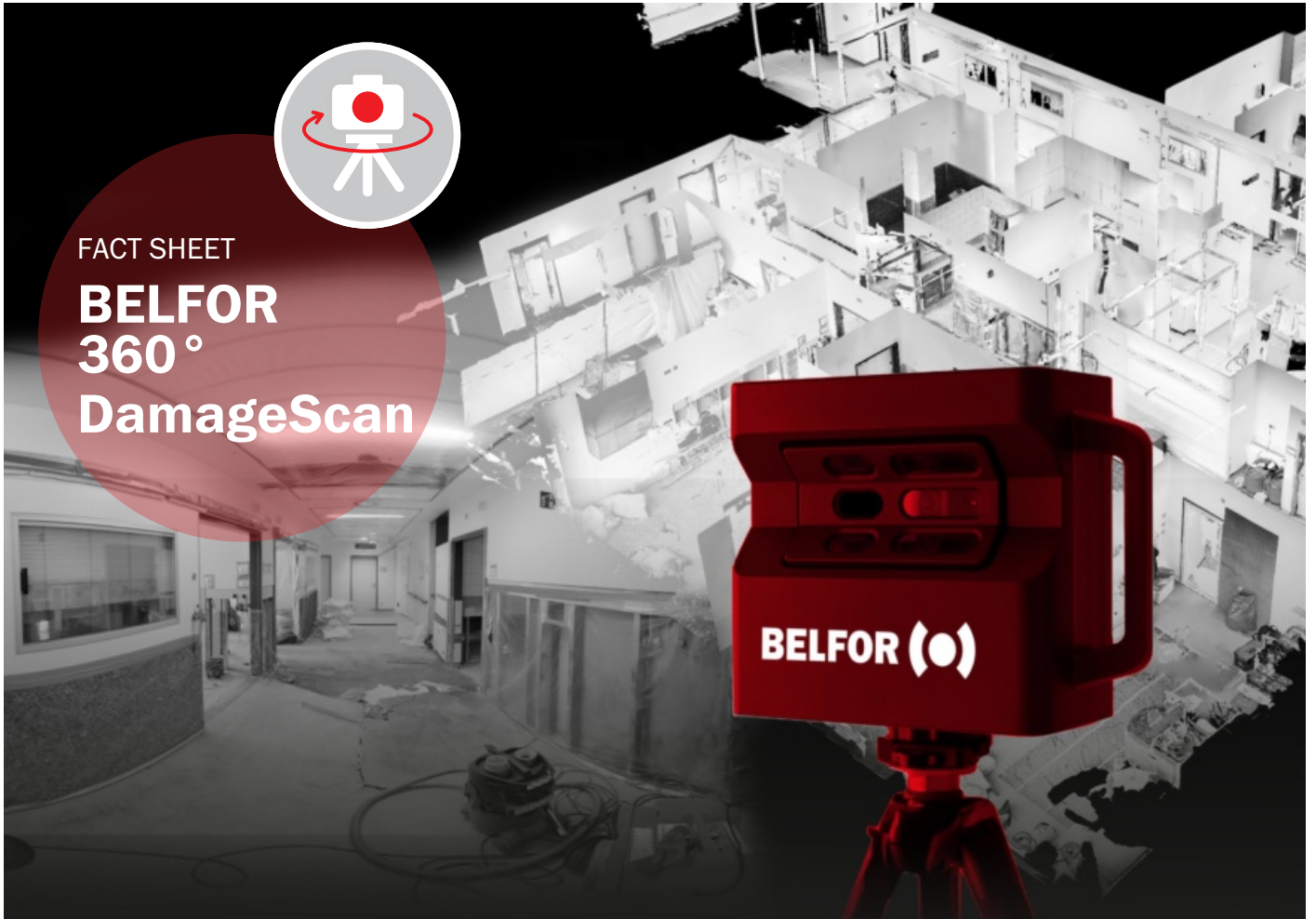




FACT SHEET

BELFOR 360° DamageScan



VIRTUAL DAMAGE DOCUMENTATION REPORTING. OBJECTIVE. RETRIEVABLE AT ANY TIME.

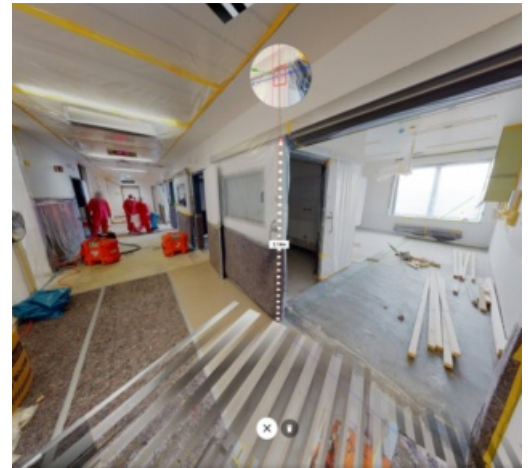
INNOVATIVE 3D DAMAGE REPORTING

When a large damage occurs, there are multiple parties involved in the recovery process, especially for insurable losses. BELFOR's 360° DamageScan provides a solution for all parties. Optimising the reporting process, providing superior information, data and insights, 360° DamageScan will simplify and shorten the recovery process, helping to control claims costs and minimising business interruption.

BELFOR 360° DAMAGESCAN IN BRIEF

- Damage reporting via a fully navigable virtual site tour
- High image quality in 4K resolution
- Zoom, note and measurement functions,
- High-precision floor plans
- Automatic creation of photos, OBJ files, Point-cloud files, videos, and other media, CAD programme compatible





"The 360° DamageScan is highly precise and offers huge time savings by making it possible to work more efficiently!"

VIRTUAL INSPECTION OF THE DAMAGE SITE

The BELFOR 360°DamageScan is a new and innovative method for virtual damage reporting. With the help of a high-resolution 3D camera, the damage site can be captured immediately after the event by the BELFOR damage experts.

Detailed inspections and assessments are possible using the zoom function.

Even accurate measurements of areas and objects are possible and detailed floorplans can be generated. Multiple views (2D Birds-Eye and 3D Dolls House) together with a fully navigable 3D virtual tour provide the viewer a complete overview and understanding of the site and damage.

Additional functionality allows for annotation, notes and labelling all with digital links to external documents and information resources. A single 360° DamageScan can also generate 4K print quality, OBJ files, Pointcloud files, videos and other media



ADDED VALUE BENEFITS FOR ALL PARTIES INVOLVED

- BELFOR 360° DamageScan is fully secure with online access to all authorised parties controlled.
- The ease and flexibility of access and level of detailed transparent information offer several benefits:
- Adjusters and experts are not reliant on visiting the damage site, saving time and costs.
- Highly detailed, accurate and transparent reporting allows for a professional assessment of the damage
- The precise measuring capability allows for desktop surveying and calculations

NON-CONTACT LOSS ASSESSMENT

Currently, due to the pandemic, many claims adjusters and surveyors are instructed to avoid face-to-face claims inspections. They are dependent on external information - which BELFOR 360°DamageScan provides them with comprehensive, precise data in greater detail than ever before. For a contactless damage assessment - and more safety for all parties involved in the damage. **For further information please contact your BELFOR Team.**

